

Profile

GeoSpatial Technology Division



MANDALAY
technology

Technologies for Development

PEOPLE

INNOVATION

SUSTAINABILITY



IT SOLUTIONS AND SERVICES



SCIENCE, TECHNOLOGY &
ENGINEERING EDUCATION SYSTEMS



ENGINEERING AND DEVELOPMENT

The Company

Mandalay Technology is the leading technology and engineering company in Myanmar with energetic and capable **people** providing **innovative solutions and services** contributing to the **sustainable development** of the country of Myanmar.

Our Core Values

- People**
- Innovation**
- Sustainability**

Our Motto

“Technologies for Development”

Our Solutions and Services

- Geospatial Solutions and Services
 - GIS/ Mapping
 - Remote Sensing
 - Topographic Surveying
 - Geotechnical Investigation
 - Hydrological and Marine Survey
- IT Solutions and Services
- Science, Technology and Engineering Education Solutions
- Consultancy Services for Engineering and Development

We are **energetic** and *innovative* professionals with various backgrounds;

- GIS / Remote Sensing Professionals
- IT and Communication Specialists
- Project Managers
- Geologists
- Returnees
- Ex-Government Officials
- Development Specialists
- Entrepreneurs/ Intra-preneurs
- Accounting and Finance Specialists
- Engineers and Architects

Leader in GeoSpatial Industry

Our Partners in Geospatial Technology , Agriculture and Water Sectors



UNESCO-IHE
Institute for Water Education



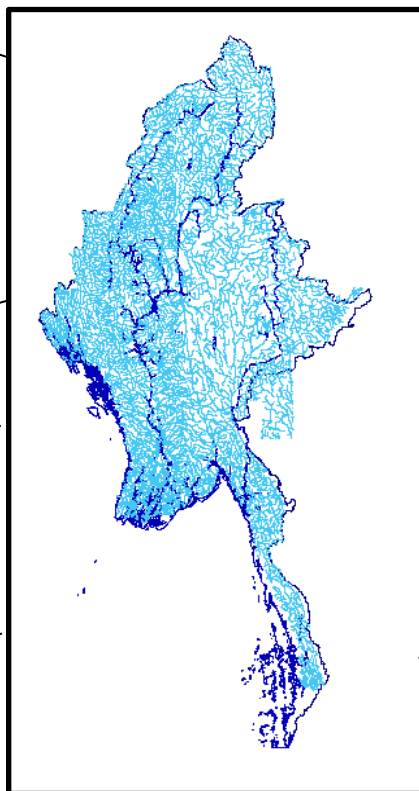
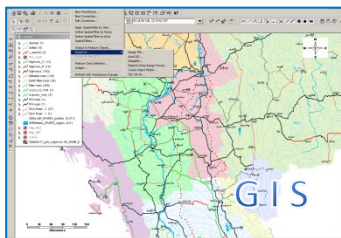
Aerial
Photography

Satellite Image
processing

Field Survey

Hydrographic
Survey

GeoTechnical
Survey



River GIS

Transportation GIS

Health GIS

Schools GIS

Irrigation GIS

Flood Risk Mapping

Archaeological GIS

Rice Yield Forecasting

Forestry GIS

Earthquake Mapping

We work with multi-stakeholders to bring about the positive changes using the geospatial technologies.



Web-GIS Seminar and Workshop.



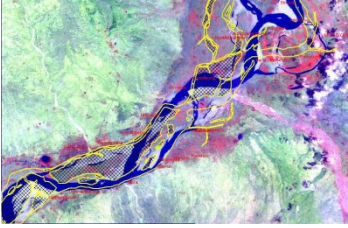
GIS Seminar and Workshop. At Yangon University

PEOPLE

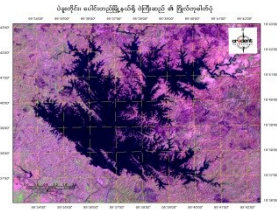
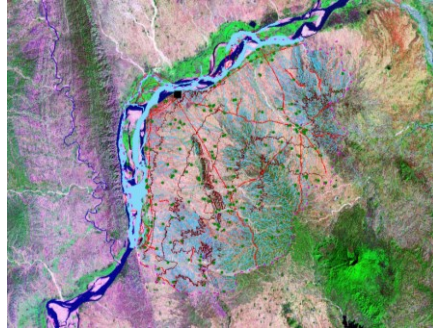
INNOVATION

SUSTAINABILITY

Leader in GeoSpatial Industry



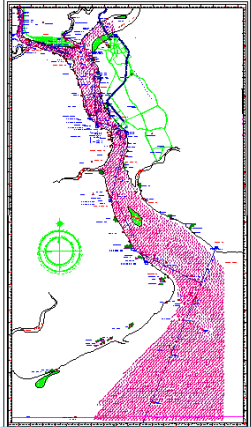
River Changes Analysis and Mapping



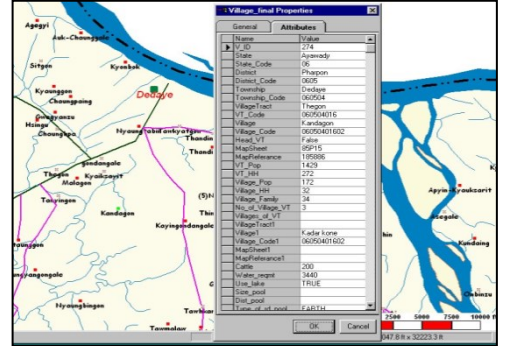
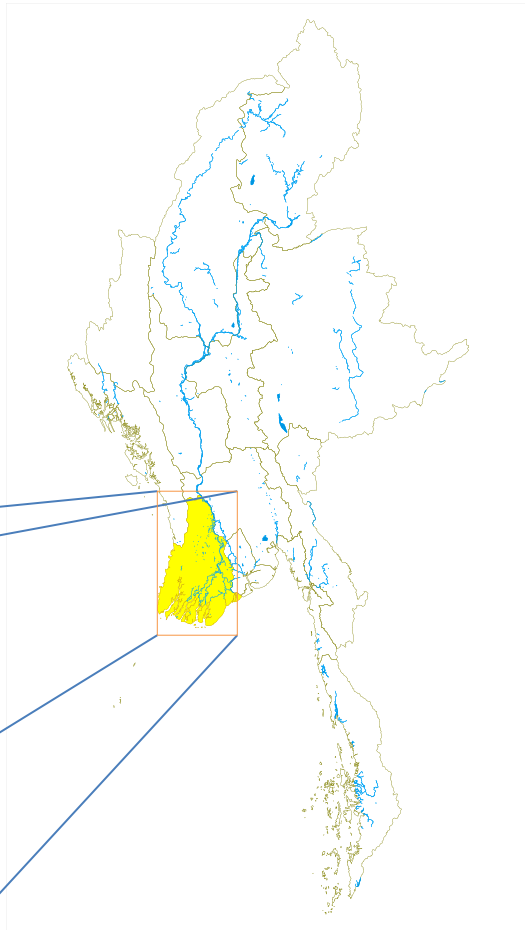
Irrigation GIS & Mapping



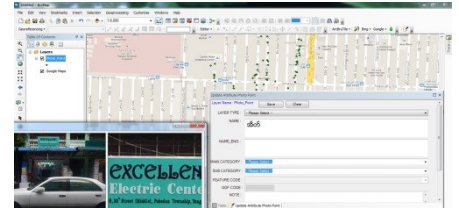
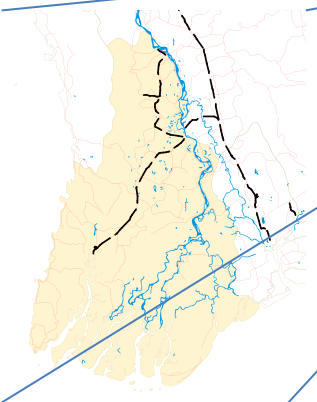
Aeronautical GIS & Mapping



Hydrographic Charting



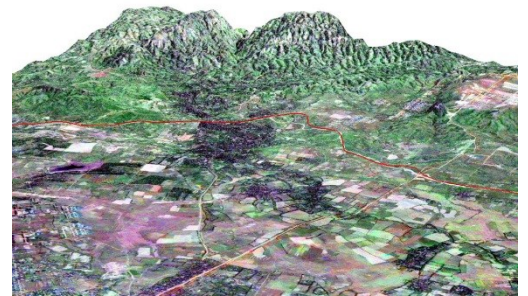
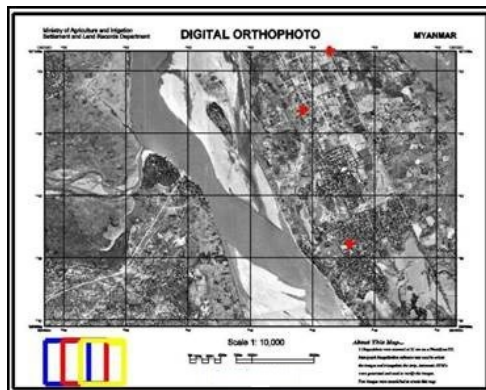
Myanmar GIS (Roads, Railways, Rivers, States, Divisions, Cities, Towns, Villages, Boundaries,...)



POI names and addresses of the whole Myanmar for web and GPS navigation



Aerial Photography



Digital Photogrammetry, Satellite Image Processing, DEM, DTM, Route Selection for Roads and Railways

PEOPLE

INNOVATION

SUSTAINABILITY

Leader in GeoSpatial Industry

CAPACITY BUILDING FOR NATION BUILDING



We believe that Capacity Building is the crucial element of the sustainable development of the country of Myanmar. We develop our people in the company, in the industry and in the country. Trainings, seminars, workshops are part of our capacity building initiatives.



GIS Training Courses at Yangon and Mandalay Universities

GIS and Remote Sensing Technologies for Disaster Risk Reduction (သဘာဝဘေးအန္တရာယ်ဆိုးကျိုးများ လျော့ချရေးအတွက် GIS နှင့် Remote Sensing နည်းပညာသင်တန်း)

သဘာဝဘေးအန္တရာယ်အန္တရာယ်ဆေးကုသမှု၊ သဘာဝဘေးအန္တရာယ်ပြစ်နိုင်စေရန်အတွက် လိုအပ်သော သတင်းအချက်အလက်များအသုံးပြုခြင်း၊ သဘာဝဘေးအန္တရာယ် အန္တရာယ်လျှော့ချရေးအတွက် သော ဖျက်ဆီးဆုံးရှုံးမှုအန္တရာယ် ခြုံငုံခြုံငုံဆောင်ရွက်ရန်၊ စောင့်ကြည့်ထိန်းသိမ်းမှု၊ စီမံခန့်ခွဲမှု၊ သဘာဝ ဘေးအန္တရာယ်လျှော့ချရေးအတွက် ထိန်းသိမ်းရေးအတွက် အန္တရာယ်လျှော့ချရေး စီမံခန့်ခွဲမှုအတွက် အသုံးပြုခြင်း၊ အသေးစားကယ်ဆယ်ရေးလုပ်ငန်းများလုပ်ကိုင်ခြင်းနှင့် ခြုံငုံလုပ်ဆောင်ခြင်းများကို ထိရောက် အောင်မြင်စွာဆောင်ရွက်နိုင်ရန် စေတနာ့တိုင်းတာမှုများဖြင့် သတင်းအချက်အလက်အလင်းပြခြင်းနှင့် (သို့မဟုတ်) သဘာဝဘေးအန္တရာယ်လျှော့ချရေးနှင့် GIS - Geographic Information Systems) နှင့် Remote Sensing) နည်းပညာများကို သင်ကြားပို့ချပေးသွားမည်။

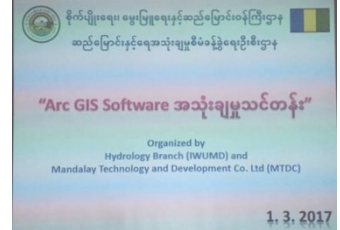
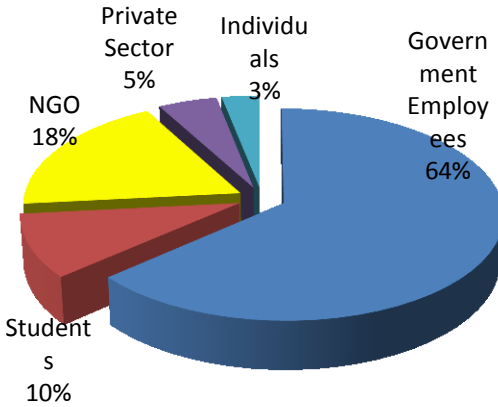


- GIS Database of Elements for Disaster Risk Reduction
- GIS and Remote Sensing Application for Disaster Risk Reduction
- Disaster Monitoring and Management using Remote Sensing and GIS



20% OFF
အစားအသုံးပြုမှုများအတွက်
အစားအသုံးပြုမှုများအတွက်
အစားအသုံးပြုမှုများအတွက်

GIS & Remote Sensing Training Participants Profile



IS Trainings at Government Departments

We received ASEAN ICT Award, Gold Award (CSR Category) for our geospatial technology training programs for environmental management, disaster management and disaster preparedness.



We are building the country of Myanmar.
We are part of Sustainable Development of the Country.
We are the technology leaders building the nation.

CAPACITY BUILDING AND HUMAN RESOURCES DEVELOPMENT FOR NATION BUILDING



We believe that Capacity Building and Human Resources Development is the crucial element of the sustainable development of the country of Myanmar. We work together with related government departments, regional governments, universities, and other stake-holders in various programs including strategic studies, feasibility studies, training programs, technical seminars, forums, workshops, and technological exhibitions. We develop people to contribute to the sustainable development of the country.

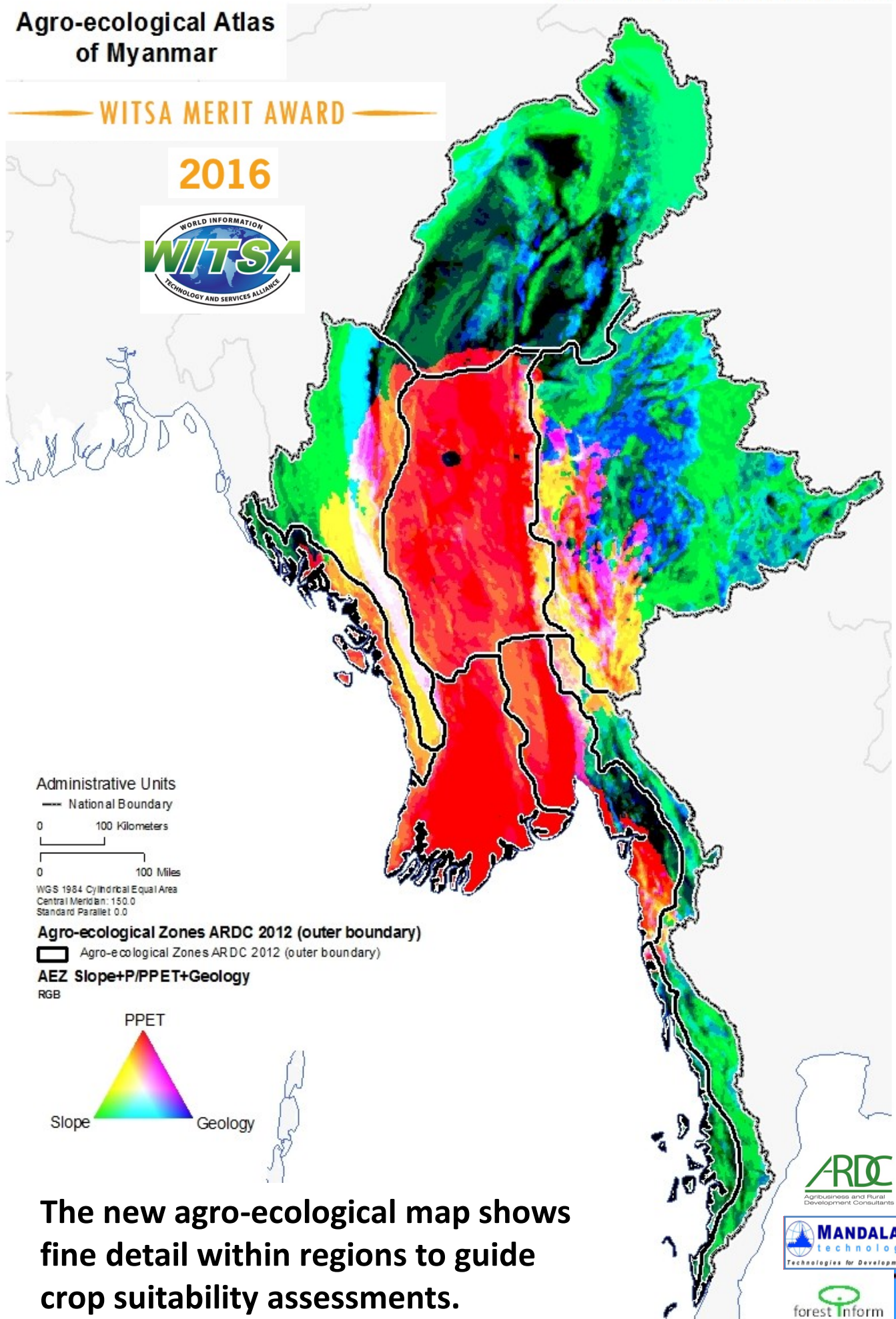


Trainings, Seminars, Forums, Workshops and Technological Exhibitions at various Universities

Agro-ecological Atlas of Myanmar

WITSA MERIT AWARD

2016



Administrative Units

— National Boundary

0 100 Kilometers

0 100 Miles

WGS 1984 Cylindrical Equal Area
Central Meridian: 150.0
Standard Parallel: 0.0

Agro-ecological Zones ARDC 2012 (outer boundary)

▭ Agro-ecological Zones ARDC 2012 (outer boundary)

AEZ Slope+P/PPET+Geology

RGB

PPET



The new agro-ecological map shows fine detail within regions to guide crop suitability assessments.



Leader in GeoSpatial Industry

OUR CUSTOMERS



ကြေးတိုင်နှင့်မြေစာရင်းဦးစီးဌာန
(Settlement and Land
Records Department)
ရေအရင်းအမြစ်
အသုံးချရေးဦးစီးဌာန
(Water Resources
Utilization Department)
ဆည်မြောင်းဦးစီးဌာန
(Irrigation Department)



မြေတိုင်းဦးစီးဌာန
(Survey Department)
သစ်တောဦးစီးဌာန
(Forest Department)



မြန်မာ့ရေနံနှင့်
သဘာဝဓာတ်ငွေ့
လုပ်ငန်း
(Myanmar Oil and
Gas Enterprise)



ရန်ကုန်မြို့တော်စည်ပင်
သာယာရေးကော်မတီ
(Yangon City
Development
Committee)



မြို့ရွာနှင့်အိုးအိမ် ဖွံ့ဖြိုး
တိုးတက်ရေး ဦးစီးဌာန
(Department of
Human settlement
and Housing
Development)



DPS မြေပုံထုတ်ဝေရေးအဖွဲ့
(Designs Printing Services)



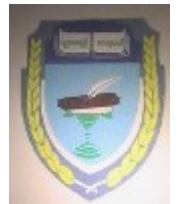
မြန်မာစီးပွားရေး
ကော်ပိုရေးရှင်း
(Myanmar
Economic
Cooperation)



ရန်ကုန်တက္ကသိုလ်
(Yangon University)



မန္တလေးတက္ကသိုလ်
(Mandalay Ur



တောင်ငူတက္ကသိုလ်
(University)



Department of Water Resources
and Improvement of River System



Japan International
Cooperation Agency (JICA)



Wildlife
Conservation
Society



သိပ္ပံနှင့်နည်းပညာဝန်ကြီးဌာန



မန္တလေးမြို့တော်စည်ပင်
သာယာရေးကော်မတီ
(Mandalay City
Development
Committee)



မြန်မာ့မီးရထား
(Myanma Railway)



မကွေးတက္ကသိုလ်
(Magway University)



Yezin
Agricultural University



နယ်စပ်ရေးရာဝန်ကြီးဌာန



Food and Agriculture Organization
of the United Nations



World Health
Organization



DAEWOO
INTERNATIONAL

PEOPLE

INNOVATION

SUSTAINABILITY

Leader in GeoSpatial Industry

OUR CUSTOMERS



MYANMA FIVE STAR LINE
THE NATIONAL FLAG CARRIER YOU CAN RELY ON

MIMU



Myanmar Information Management Unit



DEPARTMENT OF MEDICAL RESEARCH
(LOWER MYANMAR)



NIPPON KOEI



United Nations Population Fund



RESEARCH PROGRAM ON
Water, Land and Ecosystems

Our Contribution to the Human Resources Development of Myanmar

ASIAN SCIENCE CAMP



PEOPLE

INNOVATION

SUSTAINABILITY



MANDALAY
technology

Technologies for Development

Growing with Changes

Serving the Country

for the Sustainable Development

Contact Us:

Mandalay Technology

Unit 7 Building 1

Myanmar Info-Tech (MICT Park), Hlaing Township

Yangon Myanmar

Tel/ Fax: +95-1-652285 ~ 86

www.mandalay-technology.com

info@mandalay-technology.com



PEOPLE

INNOVATION

SUSTAINABILITY